

INSIDE THE CORRIDOR

Follow and engage with the Animal Health Corridor on Twitter [@AHCORRIDOR](#)



CORRIDOR VOICES

A Note from the 2020 Board Chair, Yvonne Hsu. [Read more](#)



CORRIDOR MOMENTUM

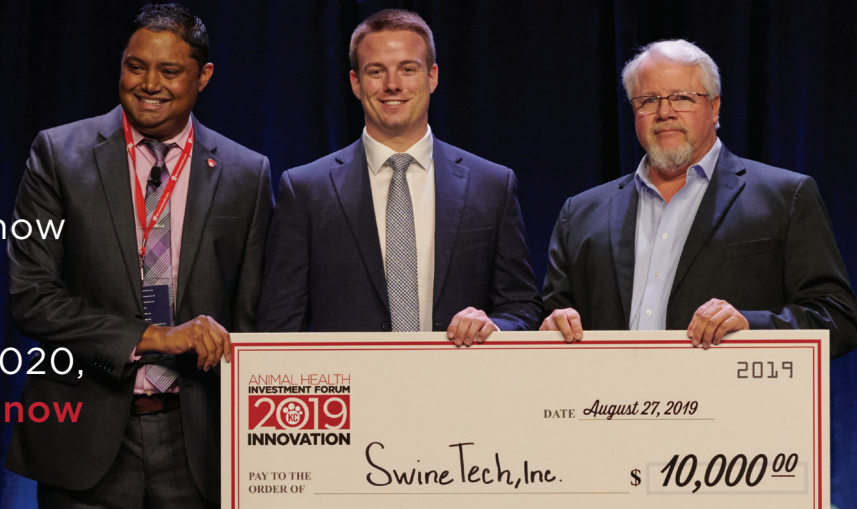
The U.S. Department of Homeland Security (DHS) remains on budget and on schedule to complete construction of the National Bio and Agro-Defense Facility (NBAF) by the end of this year. [Read more](#)



Norbrook Inc., with North American headquarters in Overland Park, Kansas, has released Selarid™ (selamectin), its first topical parasiticide for companion animals. [Learn more](#)

NOW ACCEPTING APPLICATIONS

The Animal Health Corridor is now accepting applications for the twelfth annual Animal Health Investment Forum on Sept. 1, 2020, in Kansas City, Missouri. [Apply now](#)



SAVE THE DATE GLOBAL ANIMAL HEALTH WEEK



Monday, August 31
3:00 – 5:00 p.m. (CDT)
[Add to Calendar](#)

Monday, August 31
5:00 – 9:00 p.m. (CDT)
[Add to Calendar](#)

Tuesday, September 1
7:30 a.m. – 6:00 p.m. (CDT)
[Add to Calendar](#)

Interested in becoming a sponsor? Please contact

EMILY MCVEY



SPRING NETWORKING EVENT

TUESDAY, April 7 | 4:30 - 6:30 p.m.

The Kansas City Marriott Downtown
Basie Foyer | Second Level

[Register today](#)



PARTNER EVENTS

The National Institute for Animal Agriculture (NIAA) Annual Conference provides a forum to learn, collaborate and act. [Register today](#)



The KC SmartPort twelfth Annual Industry Briefing, **KC DELIVERS**, will focus on the rapid changes occurring in the food sector, covering topics including food production and the technologies used, how consumers buy food, as well as food distribution and delivery in an on demand world. [Register today](#)



MARK YOUR CALENDAR

Upcoming Industry Events



CORRIDOR COMPANY NEWS

News from the Animal Health Corridor

[Learn more >>](#)



IN THE SPOTLIGHT

BIOMIN America Inc. recently established its North American headquarter office in Overland Park, Kansas. BIOMIN is a leading research company and producer of feed additives in the poultry, swine and ruminant markets, operating in over 130 countries. [Learn more](#)

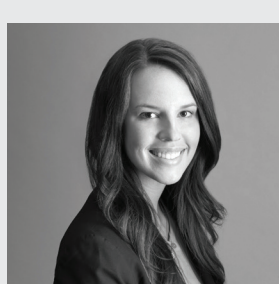


Complex legal challenges are best approached with sharp insight and creative solutions. Stinson LLP attorneys combine industry knowledge and business acumen to deliver practical legal guidance to clients of all sizes. [Read more](#)

To learn more about the Animal Health Corridor, please contact



KIMBERLY YOUNG
President



EMILY MCVEY
Director



DANNI HAMMONTREE
Specialist